



VANS
"OFF THE WALL"

VANS SNOW 2024/25

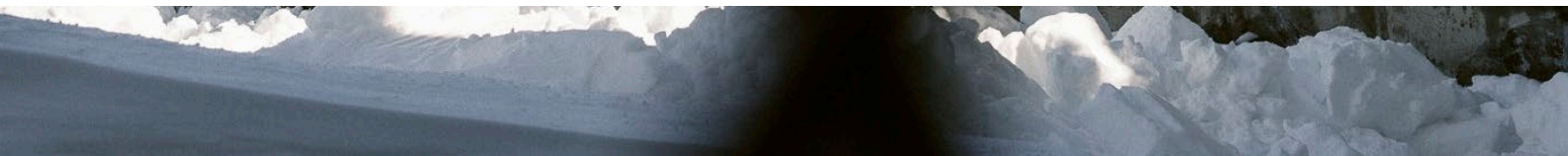


TABLE OF CONTENTS

TEAM RIDERS 3

KEY STORIES

HI-STANDARD™ PRO 4 - 5
 HI-COUNTRY SNOW APPAREL..... 6 - 7

TECHNOLOGY

POPCUSH™ 10
 ULTRACUSH™ 10
 VANS POPCUSH™ V-SERIES FOOTBEDS 11
 VANS / TNF FLASHDRY™ 12
 VANS / SMARTWOOL® 12
 VANS V-SERIES ULTRACUSH™ LINERS 13
 VANS V-SERIES SNOWWAFFLE OUTSOLES 14 - 15
 LINERLESS TECHNOLOGY 16
 VANS FLEX CONTROL SYSTEM 16
 ADAPTIVE RANGE MODE 17
 SNOWBOARD BOOT TECHNOLOGY 18 - 19
 THE BOA® FIT SYSTEM..... 20 - 21
 SNOWBOARD BOOT TECHNOLOGY 22 - 23

MEN'S SNOWBOARD BOOTS

INFUSE™ SNOWSURF 26 - 27
 INFUSE™ 28 - 29
 INVADO™ PRO 30 - 31
 INVADO™ OG 32 - 33
 VERSE™ RANGE EDITION 34 - 35
 VERSE™ 36 - 37
 AURA™ PRO 38 - 39
 AURA™ OG 40 - 41
 AURA™ LINERLESS 42 - 43
 HI-COUNTRY & HELL-BOUND™ 44 - 45
 HI-STANDARD™ PRO 46 - 47
 HI-STANDARD™ OG 48 - 49
 HI-STANDARD™ LINERLESS DX 50 - 51
 HI-STANDARD™ LINERLESS 52 - 53

WOMEN'S SNOWBOARD BOOTS

LUNA VENTANA™ PRO 56 - 57
 VIAJE™ RANGE EDITION 58 - 59
 ENCORE™ PRO 60 - 61
 ENCORE™ OG 62 - 63
 ENCORE™ LINERLESS 64 - 65
 HI-STANDARD™ PRO 66 - 67
 HI-STANDARD™ OG 68 - 69

YOUTH SNOWBOARD BOOTS

JUVIE™ OG 72 - 73
 JUVIE™ LINERLESS 74 - 75
 JUVIE™ MINI 76 - 77

WINTER MTE™ TECHNOLOGY

MOISTURE MANAGEMENT 80
 THERMOREGULATION 80
 TRACTION 81
 OTHER KEY FEATURES 81

MEN'S WINTER MTE™

MTE™ STANDARD ZIP WATERPROOF 84
 MTE™ STANDARD WATERPROOF 85
 MTE™ STANDARD MID BOA® WATERPROOF 86
 MTE™ STANDARD MID CHELSEA WATERPROOF 87
 MTE™ STANDARD MID WATERPROOF 88
 MTE™ SNOW-KICKER GORE-TEX® 89
 MTE™ SNOW LODGE SLIPPER MID 90
 MTE™ MOUNTAIN MULE 91

WOMEN'S WINTER MTE™

MTE™ STANDARD ZIP WATERPROOF 94
 MTE™ STANDARD WATERPROOF 95
 MTE™ STANDARD MID WATERPROOF 96
 MTE™ STANDARD MID CHELSEA WATERPROOF 97
 MTE™ MOUNTAIN MULE 98

APPAREL & ACCESSORIES

HI-COUNTRY SNOW COLLECTION 102 - 103
 HELLBOUND SNOW COLLECTION 104
 SNOW SOCKS 105

OVERVIEW 106 - 111

SIZE INFORMATION 112 - 113

TEAM RIDERS

BLAKE PAUL

PAT MOORE

SAM TAXWOOD

DARRELL MATHES

HANA BEAMAN

DAN LIEDAHL

JILL PERKINS

DILLON OJO

JAKE KUZYK

KENNEDI DECK

COLE NAVIN

BRYAN IGUCHI

JAMIE LYNN

MIKE RAVELSON

PARKER SZUMOWSKI

CANNON CUMMINS

SAVANNAH SHINSKE

WOLLE NYVELT

ARTHUR LONGO

BENNY URBAN

HI-STANDARD™ PRO

For this season we go back-to-back with the Hi-Standard Pro, a versatile workhorse and all-around team favorite, enjoying an exercise in creative exploration by some of the most unique personalities on our global roster. Tapping into Jill Perkins's constant pursuit of gassing up her friends to Benny Urban's tasteful skate influence, each rendition is helplessly original, true to who they are, and, frankly, we cannot get enough of it.

Epitomizing the romance that is Vans Snow's diverse cast of characters, this winter's Hi-Standard Pro lineup highlights our mission of empowering the snow community to be their most authentic selves—whether you already know who that is, or are still in the process of figuring it out. Featuring our V2 package, including a V2 UltraCush™ Smartwool® liner, a V2 POPCUSH™ footbed, and a Waffle Pro outsole, the Hi-Standard Pro continues to capitalize on the intersection of performance and self-discovery.



HI-COUNTRY SNOW APPAREL

After years of chairlift conversations with our athletes, we are excited to launch an all-new Vans High-Country snow collection. The team sat down to create rider-driven designs that brought Vans styling into pieces that can provide support for them in all different conditions.

The collection offers 3-layer waterproof protection with full on-mountain functional details matched with a modern relaxed fit for active layering and free range of movement. This collection will be offered in a unisex fashion, so that any individual can forget their worries of being protected from the elements and just enjoy the ride.



BLAKE PAUL

TECHNOLOGY



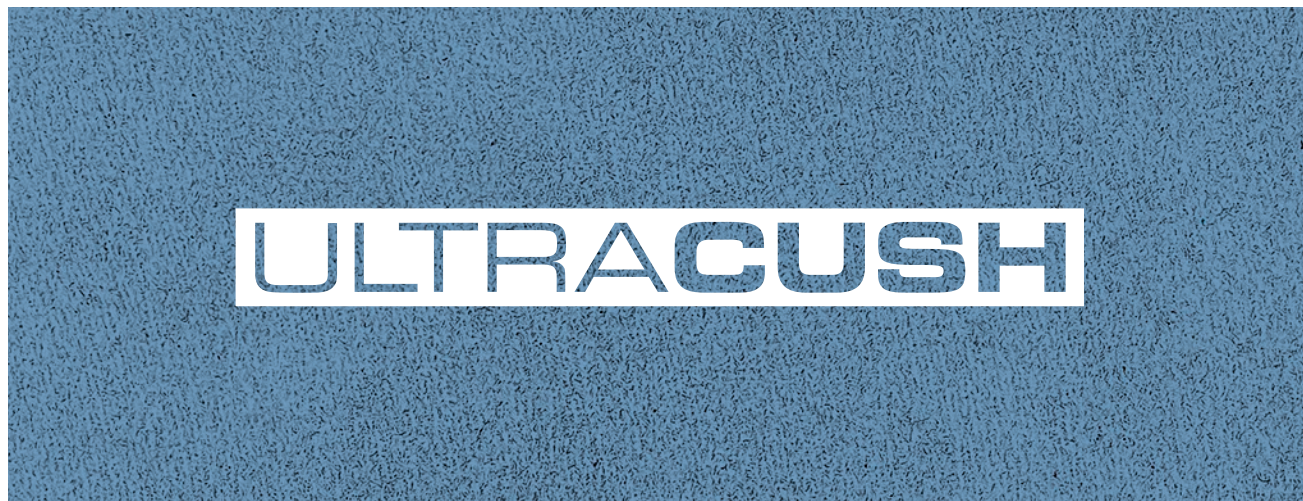
POPCUSH™

Won't pack. Pops back.
Vans' highest level of impact cushioning coupled with energy return for snowboarding, skateboarding, or BMX.



ULTRACUSH™

UltraCush is a performance foam compound developed by Vans for enhanced comfort and reduced weight.



VANS POPCUSH™ V-SERIES FOOTBEDS

Comfort and support are the foundation of snowboard boots, and the POPCUSH V-Series footbeds from Vans define both. With advanced 3D anatomical shaping and an anti-fatigue PU materialization and design, these footbeds offer an innovative formula that provides tuned energy return and the highest levels of impact cushioning. Tested and approved by our team riders, the POPCUSH V-Series footbeds provide the kind of comfort and performance that only Vans can provide.



"The POPCUSH footbeds hit different. Jumping off buildings, flying off cliffs, or standing and shoveling all day—the comfort and support is always there with the anti-fatigue PU material. No matter what the terrain or journey is, I always feel confident knowing that I'm walking on POPCUSH."

—Kennedi Deck, Vans Snow Team Rider



V3 POPCUSH FOOTBED

- Tri-density POPCUSH construction
- OrthoLite® open-cell foam top layer
- TPU arch support heel clip provides stability while allowing torsional flex
- Advanced 3D-molded anatomical shape
- Anti-fatigue coring design
- Airflow perforations
- Nylex moisture-wicking top sheet

V2 POPCUSH FOOTBED

- Dual-density POPCUSH construction
- TPU arch support heel clip provides stability while allowing torsional flex
- Advanced 3D-molded anatomical shape
- Anti-fatigue coring design
- Airflow perforations
- Nylex moisture-wicking top sheet

V1 POPCUSH FOOTBED

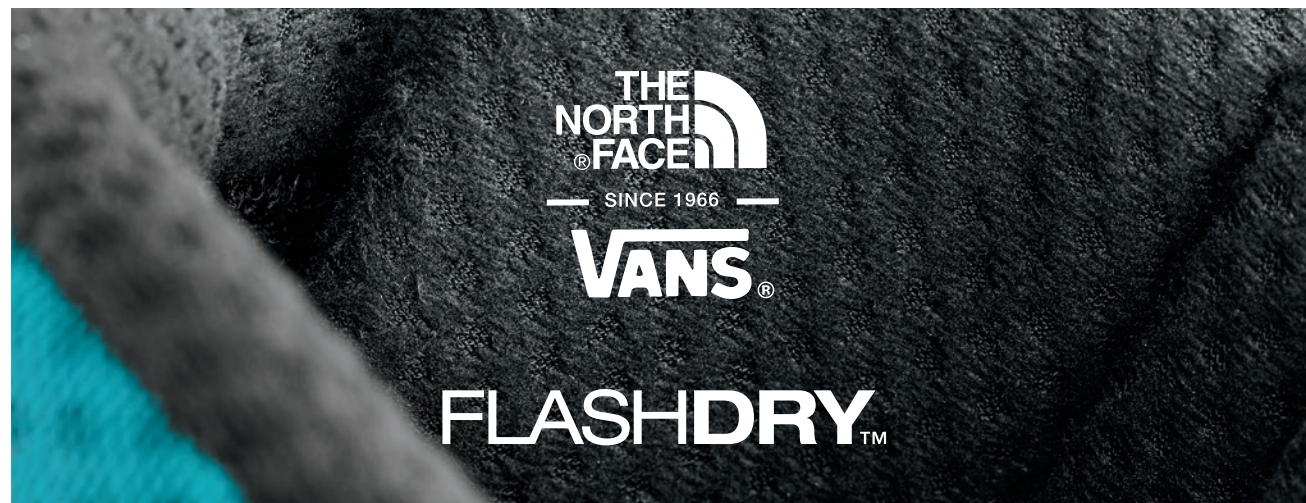
- Single-density POPCUSH construction
- Advanced 3D-molded anatomical shape
- Anti-fatigue coring design
- Airflow perforations
- Nylex moisture-wicking top sheet

YOUTH ULTRACUSH GROW-WITH-YOU SHIM

Designed for growing feet, this practical youth footbed sits atop a second built-in footbed and can be removed as the foot size grows, adding a half-size of extra room and extending the life of the boot.

VANS / TNF FLASHDRY™

Vans and trailblazing outdoor innovator The North Face™ continue their partnership on the first-to-market FlashDry-equipped snowboard boot liner. FlashDry fabric technology is engineered to act like a second skin, pushing moisture to the surface and eliminating it as fast as possible. These fabrics are engineered to repel and resist wetting out to help provide quick-drying performance that keep the user dry and comfortable. Setting a new industry standard in moisture management and all-conditions comfort, this technology has now been integrated into all of the Vans V3 UltraCush™ TNF FlashDry liners.



VANS / SMARTWOOL®

Vans continues our partnership with the Merino wool experts at Smartwool with the V2 UltraCush™ Smartwool liner, made with soft, odor-resistant, moisture-managing Merino wool to keep you feeling dry and comfortable even in the deepest powder. Merino wool is warm yet breathable—helping to maintain a dry, thermoregulated microclimate inside your boot. As your body heats up, sweat vapor is quickly absorbed by the wool fiber and transported away from your skin. A Merino fiber can absorb and retain up to 30% of its own weight in moisture and still feel dry to the touch. This makes it perfect for everything from long runs on groomers to backcountry explorations. Forget about heading in early—the V2 UltraCush™ Smartwool liner will help you stay warm, dry, and ready for the last chair.



VANS V-SERIES ULTRACUSH™ LINERS

Our mission with the entire offering of V-Series liners is to have a simple and comfortable way to optimize boot fit and performance. Fewer seams, UltraCush-level comfort packages, and neoprene flex zones are just a few of the features that set Vans liners apart. These designs represent the most advanced concepts ever delivered from Vans. As in previous years, all V3 liners incorporate The North Face's FlashDry technology, and all V2 liners come outfitted with Smartwool Merino wool. Be prepared to reset your expectations.



V3 ULTRACUSH TNF FLASHDRY LINER

- UltraCush interior cushioning layer
- The North Face FlashDry materialization
- Expanded Comfort Flex neoprene forefoot
- Updated X-Cage for superior heel hold
- Dual-density, heat-moldable core
- Closed-seam microsuede cuff and tongue



V3 RANGE EDITION LINER

The V3 Range Edition liner offers all the same great features as its V3 counterpart, but adds the extended and lower-reaching PleasureCuff™. When combined with the Adaptive Range Mode, expect an unmatched range of motion when hiking or skinning.



X-CAGE

This heel lock component offers an asymmetrical, anatomical shape that fills the space around your ankle bones with a soft durometer EVA foam. Available on the V2 UltraCush Smartwool and V3 UltraCush FlashDry liners, the X-Cage is designed to keep your foot securely in the heel pocket and in constant contact with your snowboard.



V2 ULTRACUSH SMARTWOOL LINER

- UltraCush interior cushioning layer
- Smartwool Merino wool materialization
- Extended Comfort Flex neoprene toe box
- Updated X-Cage for superior heel hold
- Dual-density, heat-moldable core



V1 ULTRACUSH LINER

- UltraCush interior cushioning layer
- Dual-density, heat-moldable core
- Comfort Flex neoprene toe box
- Closed-seam brushed fleece cuff



STANDARD™ XF ULTRACUSH™ LINER

- UltraCush interior cushioning layer
- Dual-density, heat-moldable core
- Expanded Comfort Flex neoprene forefoot
- Closed-seam brushed fleece cuff

VANS V-SERIES SNOWWAFFLE OUTSOLES



Vans SnowWaffle outsoles are engineered to optimize two things: boardfeel and traction. A quality connection to your snowboard provides the ability to be both proactive and reactive. In parallel, balancing traction needs from parking lots and lift lines to backcountry hikes is paramount to our SnowWaffle outsoles, and 50+ years of traction development technology from Vans helps to inform these designs.



V3 SUPERENDURO WAFFLE OUTSOLE

Inspired by the extended cross-country and off-road demands of moto enduro racing, the V3 SuperEnduro outsole is designed to offer maximum performance in and out of your bindings. Multi-directional tread design? Surface-level texturing? A TPU toe pick? Check, check, and check. There's no keeping up with this all-terrain apex predator.

- **ALL-TRAC** Rubber Compound
- Molded TPU toe pick
- Multi-directional, dynamic lug tread pattern
- Surface-level waffle ripple for added traction and snow shed
- UltraCush Lite midsole construction with mid-foot support shank
- Expanded impact absorption zone

ALL-TRAC



All-Trac is formula-based, proprietary rubber compound developed by Vans. This specialized cold weather recipe is optimized with increased flexibility, which allows lugs to bend with terrain changes, creating more surface area and better variable adaptability.



V2 WAFFLE PRO

The V2 Waffle Pro is a progressively inspired and capability-driven design built for both on- and off-snowboard performance. Uncompromising natural flex and a weight-reducing, impact-resisting UltraCush midsole provide incredible boardfeel, while a Vans-exclusive pattern and rubber compound give you the confidence you need to scramble the side country with confidence.

- **ALL-TRAC** Rubber Compound
- Dynamic lug tread pattern features a siped tire-like design for increased traction
- Toe picking treads and a higher toe bumper for grip and protection
- UltraCush Lite midsole construction for lightweight, impact-absorbing performance



V1 WAFFLE LUG

The original Vans waffle outsole is an iconic skate classic, and the V1 Waffle Lug outsole pays tribute to the timeless vulcanized look that put Vans on the map. Expect high levels of boardfeel and traction from the Waffle Lug outsole.

- **ALL-TRAC** Rubber Compound
- Aggressive reverse waffle lug pattern for all-mountain and street performance
- Vans' special recipe rubber compound for all-condition traction

LINERLESS TECHNOLOGY



The bottom line: Linerless technology redefines simplicity and modern comfort. Its lightweight construction and slimmed-down upper reduces a boot's overall size and weight. An increased internal foam package provides a softer, more cushioned feel. Without internal harnessing, riders will experience unmatched ease in and out of the boot. A calculated combination of support and free-flex articulation makes linerless technology ideal for performance, street, or park riders choosing the Hi-Standard™ DX boot, or skill- and price-conscious riders looking for value and comfort in the new Aura™, Encore™, Hi-Standard™, or Juvie™ linerless models.

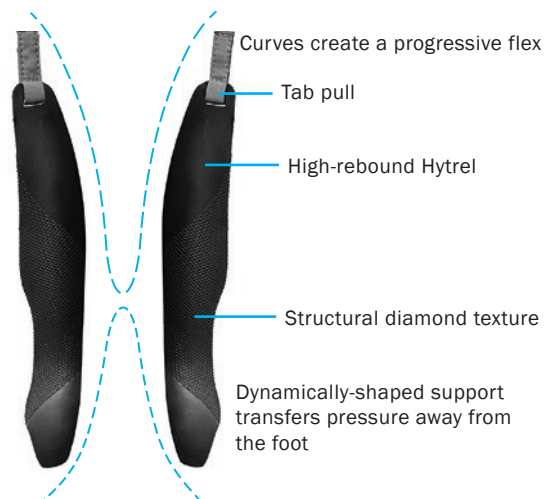


VANS FLEX CONTROL SYSTEM (PATENT PENDING)

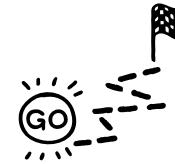


Our removable, high-rebound Hytrel® tongue stiffeners enable riders to custom-tune their boot flex. Keep both in for maximum support, use just one for increased lateral or medial response, or take them both out for a softer-flexing boot. As your boots soften up over time, add the tongue stiffeners back in to extend the life of your boots.

REMOVABLE INTERNAL TONGUE STIFFENERS



ADAPTIVE RANGE MODE



The functional objective of Adaptive Range Mode is to widen the opening of the snowboard boot to allow for a more natural gait and extended range of motion on overland adventures or commuting uphill travel. Whether on a splitboard, approach skis, or just going for a good old-fashioned walk for that fresh line, disengaging the Ride Mode strap opens the Rear Drop-Cuff and two-way stretch gore, providing significantly more calf articulation. This allows for longer strides and subsequently less wasted energy.

When combined with the V3 Range Edition UltraCush TNF FlashDry liner, which offers an extended and lower-reaching PleasureCuff, the result is an unmatched range of motion. In Ride Mode or Range Mode, the Adaptive Range Mode feature turns any boot into a freeride and backcountry tool.



V3 Range Edition UltraCush TNF FlashDry liner

30mm harness webbing Range Limiter

Two-way stretch gore Rear Drop-Cuff



WATERPROOF ZIPPER SHROUD + D-RING



This feature is a durable and weatherproof fabric shield that protects the lower part of your boot from snow, ice, and moisture, ensuring easy access to your BOA® closure no matter what the weather throws at you. It also features a metal D-ring for securely fastening your pant gaiters to lock out snow.



POWERCUFF STRAP



The PowerCuff Strap provides extra support at the top of the boot for increased stability and response.



EXOCAP



A molded plastic toe cap provides maximum protection and extra space in the toe box to keep your toes wiggling and warm.



BOOT HARNESSES



V3 HARNESS

This advanced support harness delivers our highest level of support to the ankle and instep, keeping the V3 liner and boot shell locked in and connected.



V2 HARNESS

Customize your heel hold with the V2 harness as it works in tandem with the V2 liner to provide enhanced support and personalized fit.



V1 HARNESS

Our lightest and most simple harness is designed to ensure effective support and heel hold when paired with our V1 liner.



VANS HEAT RETENTION 360°

All Vans snowboard boots feature a newly improved thermal retention layer that provides a 360° wrap of the toe box and between the outsole and the liner. This essential layer keeps heat in and cold out, ensuring all-day warmth and comfort.



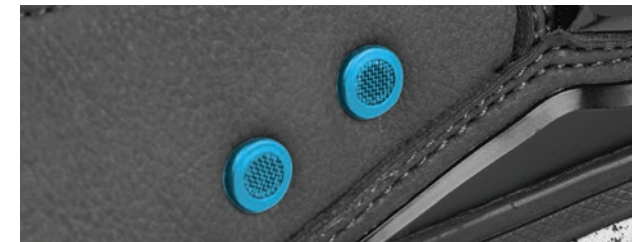
INSTEP FLEX ZONE

The Instep Flex Zone functions to maintain natural ankle flexion in your boot, whether in or out of your bindings.



PLEASURECUFF™

The supple elasticity of the PleasureCuff delivers a cushioned, comfortable fit that keeps your calves supported.



BREATHABLE VALVES

These waterproof valves allow one-way moisture management by transporting moisture away from your foot, ensuring breathability and thermal regulation for dry, comfortable feet.

THE BOA® FIT SYSTEM

Vans has backed BOA® since day one. As the proven leader, the BOA® Fit System delivers a fast, effortless, precision fit. Offering on-the-fly micro-adjustability for unmatched adjustment and custom fit, our latest range of BOA® boots is—top to bottom—our best collection to date.



THE BOA®
GUARANTEE

BOA® DELIVERS DIALED-IN PERFORMANCE AND MICRO-ADJUSTABLE, PRECISION FIT.

Dialed-in, micro-adjustable precision fit designed to give riders the freedom to adjust tension and regulate boot flex. Engineered to withstand impact from the most demanding riders, BOA delivers uncompromising durability in the park or technical backcountry terrain.



THE BOA® FIT SYSTEM FEATURING VANS CUSTOM FOCUS PLUS

Custom Focus Plus features two high-power (H4) dials that control three zones of fit linked by Vans' exclusive Custom Slide Guide, delivering concentrated fit around the instep area for superior heel hold.



THE BOA® FIT SYSTEM FEATURING VANS CUSTOM FOCUS

Custom Focus features a high-power coiler dial (H4) and a mid-power remote dial (M3v2) to control three zones of fit linked by Vans' exclusive Custom Slide Guide, delivering concentrated fit around the instep area for focused heel hold.

VANS HYBRID AND HYBRID PLUS SYSTEMS FEATURING THE CUSTOM SLIDE GUIDE (PATENT PENDING)

Both Hybrid fit systems put comfort and control at your fingertips. This tech combo enables adjustable flex control and powerful heel hold through the instep area using the Custom Slide Guide. Simply slide it to where you need it ... and get dialed in.



VANS HYBRID PLUS



VANS HYBRID



VANS HYBRID PLUS BOA® FIT SYSTEM

The Hybrid Plus system expands the range of flex control from the original Hybrid BOA® configuration by adding an extra BOA® lace that passes around the back of the boot and across the instep to optimize the lines of pull and maximize the flex control capabilities.



VANS HYBRID BOA® FIT SYSTEM

The Hybrid system merges traditional lacing with the power of the BOA® Fit System at the instep and the adjustable flex control of the Custom Slide Guide for secure, targeted heel hold and true custom fit.

BOOT GUIDES

Selecting the right boot isn't always easy. There are a lot of choices and if you're not familiar with all the specific features and benefits of each one, it can be overwhelming. We understand this. So along with the listing of tech features that follows for each boot, you will find three different guides to help you narrow down the right options for you. From selecting a preferred flex to assessing your own skill level (and even the terrain style that you primarily ride) these guides are intended to take away some of the guesswork of finding the boot that best matches your needs.

VANS SKILL LEVEL GUIDE

The Skill Guide allows riders to self-evaluate while selecting boots. Most boots provide ranges from Beginner to Intermediate or Intermediate to Advanced, although some boots are specific to Beginners or Advanced riders. Selecting a range and boot that best match your current skill level increases your chances of finding the best possible fit for you.



BEGINNER



INTERMEDIATE



ADVANCED

VANS FLEX GUIDE

Our flex rating provides a point reference for how boots within the Vans line compare in flexibility. A lower number designates a softer-flexing boot; higher numbers designate a more supportive boot. Boots equipped with the Vans Flex Control System, PowerCuff Strap, and Hybrid Plus systems will have larger ranges, indicating the scope of flex within which each boot can be adjusted.

MOST FLEX



MOST SUPPORT

TERRAIN GUIDE

Similar to the Skill Level Guide, when riders are selecting a boot they should self-evaluate the terrain style that they primarily ride. Again, most boots offer ranges from Park/Street to All-Mountain or All-Mountain to Big Mountain/Backcountry, but some are specific to certain terrains. It's optimal to select a boot that best fits the terrain that you ride most frequently.



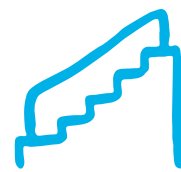
BACKCOUNTRY

Purpose-built for steep, deep, untouched terrain, above treeline, and beyond the boundaries.



ALL-MOUNTAIN

Optimized for versatility, from parks and powder to side hits, rails, and everything in between.



PARK / STREET

Adapted to the technical terrain of parks, transitions, and urban environments.

LINE ARCHITECTURE

Line architecture is a framework that simplifies how we think and talk about our boots by creating clearly defined product levels. This structure makes it easier for us to communicate consumer choices based on user benefits and needs, rather than specific features or price points.

TOP SHELF



VANS' MOST CUSTOMIZABLE, TECHNICALLY ADVANCED, AND PERFORMANCE-FOCUSED LEVEL OF PRODUCT.

PRO SPEC



DEFINED BY INNOVATIVE AND FUNCTIONAL TEAM-TESTED TECHNOLOGIES AND ELEVATED COMFORT FEATURES.

OG SPEC



CLASSIC VANS STYLE BUILT WITH PROVEN COMFORT AND PERFORMANCE FOR ALL CONDITIONS.

LINERLESS



VANS' LINERLESS COLLECTION PROVIDES LIGHTWEIGHT CONSTRUCTION THAT REDEFINES SIMPLICITY AND MODERN COMFORT.

FRANCHISES

A product franchise is a grouping of products based on similarities and common lineage. Think of it as an expandable family of products with a well-defined identity, making it easier to tell strong, consistent product stories. Franchising also makes it easier to understand and relate to specific products when choosing which is best for you. Each of these franchise platforms represents a specific set of values and spec levels that define our most popular products.

AURA™

- Men's BOA® product
- Vans brand DNA in look and feel
- Product designed for Vans enthusiasts looking for BOA® closure technology
- Intended for high levels of rideable versatility and cross-terrain performance

HI-STANDARD™

- Men's and women's lace product
- Offers our most classic Vans brand looks
- Product designed and built for our most expressive of creators and lace purists
- Intended to offer style, performance, and comfort from peaks to parking lots

INVADO™

- Men's Hybrid BOA® product
- Classic Vans aesthetic with progressive closure technology
- Purpose-built for cross-functional, variable terrain use
- Intended to perform at a high level with customizable closure and support

ENCORE™

- Women's BOA® product
- Vans brand DNA in look and feel
- Product designed for Vans enthusiasts looking for BOA® closure technology
- Intended for all-day, everyday comfort and performance

MEN'S SNOWBOARD BOOTS



**NEW
STYLE**

INFUSE™ SNOWSURF

Drawing inspiration and design language from the heart of snow surfing's origin in Japan, the Infuse SnowSurf snowboard boot embodies the fluid and artistic mindset of utilizing natural mountain contours for an unparalleled ride. This new model combines a V2 outsole, complemented by a V3 liner and footbed to deliver top-tier comfort and performance. The oversized PleasureCuff™ helps increase the boot's range of motion while navigating turns effortlessly, while an asymmetrical flex pattern creates enhanced mobility to ensure versatile and fluid rides from edge to edge. Experience the fusion of Japanese-inspired culture and high-end performance design in every carve with the Infuse SnowSurf boot.



TECH SPECIFICATIONS

SIZES: 7 / 7.5 / 8 / 8.5 / 9 / 9.5 / 10 / 10.5 / 11 / 11.5 / 12 / 13

FLEX RATING: 5-9		SKILL LEVEL			TERRAIN GUIDE		
1 2 3 4 5 6 7 8 9 10	MOST FLEX	BEGINNER	INTERMEDIATE	ADVANCED	BACKCOUNTRY	ALL-MOUNTAIN	PARK / STREET
KEY FEATURES							

ULTRACUSH

FLASHDRY™

V3 ULTRACUSH WITH
TNF FLASHDRY LINER



V3 POPCUSH FOOTBED



V2 WAFFLE PRO OUTSOLE WITH ALL-TRAC
COLD WEATHER RUBBER COMPOUND



BOA FIT SYSTEM WITH VANS HYBRID
CUSTOM SLIDE GUIDE

OTHER FEATURES



WATERPROOF ZIPPER SHROUD
+ D-RING



POWERCUFF STRAP



WATERPROOF, BREATHABLE VALVES



ASYMMETRICAL FLEX ZONE



V3 HARNESS



VANS FLEX CONTROL SYSTEM



HEAT RETENTION 360°



BROWN/BLACK
VN000CZ8Y49

INFUSE™

The Infuse is about performance. Always has been. Always will be. Since its earliest iterations, the drive towards progression has been central to its design. And this hands-down, next-level, best-in-class Infuse will reset your expectations of what a snowboard boot should be. Loaded with top-shelf features and the Vans Hybrid Plus BOA® Custom Fit System, it's got just about everything you've ever wanted in a snowboard boot. Question is—what're you gonna do with it?



TECH SPECIFICATIONS

SIZES: 7 / 7.5 / 8 / 8.5 / 9 / 9.5 / 10 / 10.5 / 11 / 11.5 / 12 / 13

FLEX RATING: 5-9	SKILL LEVEL	TERRAIN GUIDE
<p>MOST FLEX MOST SUPPORT</p>	<p>BEGINNER INTERMEDIATE ADVANCED</p>	<p>BACKCOUNTRY ALL-MOUNTAIN PARK / STREET</p>
KEY FEATURES		

ULTRACUSH

FLASHDRY™

V3 ULTRACUSH WITH TNF FLASHDRY LINER



V3 POPCUSH FOOTBED



V3 WAFFLE SUPERENDURO OUTSOLE WITH ALL-TRAC COLD WEATHER RUBBER COMPOUND



BOA FIT SYSTEM WITH VANS HYBRID PLUS CUSTOM SLIDE GUIDE

OTHER FEATURES



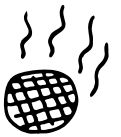
WATERPROOF ZIPPER SHROUD + D-RING



EXOCAP MOLDED TOE PROTECTION



VANS FLEX CONTROL SYSTEM



WATERPROOF, BREATHABLE VALVES



ASYMMETRICAL FLEX ZONE



POWERCUFF STRAP



V3 HARNESS



HEAT RETENTION 360°



BLACK/PEWTER
VN0A3DILHR0



BLACK/WHITE
VN0A3DILBA2

INVADO™ PRO

The Invado Pro packs an innovative arsenal of features and benefits that makes it one of the most versatile snowboard boots available. Combining the unlimited customization of Vans' Hybrid BOA® Fit System and the unmatched heel hold of the Custom Slide Guide with the comfort and warmth of the V2 UltraCush™ Smartwool® liner and the terrain management of a V2 Waffle Pro outsole, the Invado Pro delivers true pro-level performance in any situation.



TECH SPECIFICATIONS

SIZES: 7 / 7.5 / 8 / 8.5 / 9 / 9.5 / 10 / 10.5 / 11 / 11.5 / 12 / 13

FLEX RATING: 5-7	SKILL LEVEL	TERRAIN GUIDE
<p>MOST FLEX MOST SUPPORT</p>	<p>BEGINNER INTERMEDIATE ADVANCED</p>	<p>BACKCOUNTRY ALL-MOUNTAIN PARK / STREET</p>
KEY FEATURES		

ULTRACUSH

Smartwool.

V2 ULTRACUSH WITH SMARTWOOL LINER



V2 POPCUSH FOOTBED



V2 WAFFLE PRO OUTSOLE WITH ALL-TRAC COLD WEATHER RUBBER COMPOUND



BOA FIT SYSTEM WITH VANS HYBRID CUSTOM SLIDE GUIDE

OTHER FEATURES



POWERCUFF STRAP



INSTEP FLEX ZONE



HEAT RETENTION 360°



PLEASURECUFF



BLACK/OLIVE
VN0A54FNBK0



BLACK/GUM
VN0A54FNB9M

LLT = Long Lead Time - Add additional 30 days when ordering

INVADO™ OG

The Invado OG combines a Vans classic look with the solution to an age-old snowboarding problem—the lack of a decent heel hold. The Vans' Hybrid BOA® Fit System merges traditional lacing and the power of BOA® closure at the instep with the Custom Slide Guide to provide targeted and instant customizable heel hold in any terrain or situation. This makes the Invado OG an easy choice for any rider looking for style and performance at an incredible value.

TECH SPECIFICATIONS

SIZES: 7 / 7.5 / 8 / 8.5 / 9 / 9.5 / 10 / 10.5 / 11 / 11.5 / 12 / 13

FLEX RATING: 4-6	SKILL LEVEL	TERRAIN GUIDE
<p>MOST FLEX MOST SUPPORT</p>	<p>BEGINNER INTERMEDIATE ADVANCED</p>	<p>BACKCOUNTRY ALL-MOUNTAIN PARK / STREET</p>
KEY FEATURES		

ULTRACUSH

V1 ULTRACUSH LINER



V1 POPCUSH FOOTBED



V1 WAFFLE LUG OUTSOLE WITH ALL-TRAC COLD WEATHER RUBBER COMPOUND



BOA FIT SYSTEM WITH VANS HYBRID CUSTOM SLIDE GUIDE

OTHER FEATURES



V1 HARNESS



INSTEP FLEX ZONE



PLEASURECUFF



HEAT RETENTION 360°



WHITE/GREY
VN0A54FM92A



BLACK/WHITE
VN0A54FMY28

VERSE™ RANGE EDITION

Designed to support overland adventures and uphill travel, this upgraded version of the Verse is intended to be a functional and reliable addition to any backcountry toolkit. The Range Edition's Adaptive Range Mode features a Range Limiter and Rear Drop-Cuff that can be unlocked to widen the top opening of the boot for a significantly expanded range of motion. Skinning a switchback, punching up for quick pow scores, ripping the snowmobile deep into the hills, or just going for a good old-fashioned hike, the Verse Range Edition gets you there with less effort and more protective versatility than ever before.



TECH SPECIFICATIONS

SIZES: 7 / 7.5 / 8 / 8.5 / 9 / 9.5 / 10 / 10.5 / 11 / 11.5 / 12 / 13

FLEX RATING: 6-9	SKILL LEVEL	TERRAIN GUIDE
<p>MOST FLEX MOST SUPPORT</p>	<p>BEGINNER INTERMEDIATE ADVANCED</p>	<p>BACKCOUNTRY ALL-MOUNTAIN PARK / STREET</p>
KEY FEATURES		

ULTRACUSH
FLASHDRY™

V3 RANGE EDITION ULTRACUSH WITH TNF FLASHDRY LINER

POP CUSH

V3 POPCUSH FOOTBED

SNOWWAFFLE
OUTSOLE
ALL-TRAC

V3 WAFFLE SUPERENDURO OUTSOLE WITH ALL-TRAC COLD WEATHER RUBBER COMPOUND

BOA
DIALED IN.
PRECISION FIT.

BOA FIT SYSTEM FEATURING VANS CUSTOM FOCUS PLUS WITH SLIDE GUIDE

OTHER FEATURES

ADAPTIVE RANGE MODE

WATERPROOF ZIPPER SHROUD + D-RING

EXOCAP MOLDED TOE PROTECTION

VANS FLEX CONTROL SYSTEM

WATERPROOF, BREATHABLE VALVES

ASYMMETRICAL FLEX ZONE

INSTEP FLEX ZONE - BOA SPECIFIC

POWERCUFF STRAP



BLAKE PAUL FOREST/BLACK
VN0A4UVDACW



MTE STANDARD MID WATERPROOF
BLAKE PAUL BLACK/FOREST
VN000D2C2MC
SIZES: 3.5-12, 13



MTE SNOW LODGE SLIPPER MID
BLAKE PAUL FOREST/BLACK
VN000D2AACW
SIZES: 4-12, 13 (Whole sizes only)

VERSE™

The Verse has long been regarded as one of the most versatile technical terrain boots available today. And this next iteration brings generational advancements in both performance and protection. With a BOA® Fit System featuring Vans Custom Focus Plus routing and Custom Slide Guide, the Verse is optimized for precision and power. Complemented by ExoCap protection and a V3 SuperEnduro Waffle outsole, it's also well-outfitted for backcountry missions and more capable of destroying resort groomers than ever before. Top to bottom, the newly redesigned Verse is engineered to be in a class of its own.



TECH SPECIFICATIONS

SIZES: 7 / 7.5 / 8 / 8.5 / 9 / 9.5 / 10 / 10.5 / 11 / 11.5 / 12 / 13

FLEX RATING: 6-9	SKILL LEVEL	TERRAIN GUIDE
<p>MOST FLEX MOST SUPPORT</p>	<p>BEGINNER INTERMEDIATE ADVANCED</p>	<p>BACKCOUNTRY ALL-MOUNTAIN PARK / STREET</p>
KEY FEATURES		

ULTRACUSH

FLASHDRY™

V3 ULTRACUSH WITH TNF FLASHDRY LINER



V3 POPCUSH FOOTBED



V3 WAFFLE SUPERENDURO OUTSOLE WITH ALL-TRAC COLD WEATHER RUBBER COMPOUND



BOA FIT SYSTEM FEATURING VANS CUSTOM FOCUS PLUS WITH SLIDE GUIDE

OTHER FEATURES



WATERPROOF ZIPPER SHROUD + D-RING



EXOCAP MOLDED TOE PROTECTION



VANS FLEX CONTROL SYSTEM



WATERPROOF, BREATHABLE VALVES



ASYMMETRICAL FLEX ZONE



INSTEP FLEX ZONE - BOA SPECIFIC



POWERCUFF STRAP



HEAT RETENTION 360°



PARKER SZUMOWSKI BLACK/BUNGEE CORD
VN0A3DIQ4Y4

AURA™ PRO

Featuring comfort, control, and style that only Vans can offer, the Aura Pro delivers on its versatile, hardworking reputation as the boot built to perform in all environments. A dual-zone BOA® Fit System featuring Vans Custom Focus provides unlimited on-the-fly micro-adjustability backed by the customizable comfort and heel hold of the Custom Slide Guide. Add in the V2 UltraCush™ Smartwool® liner and V2 Waffle Pro outsole, and the Aura Pro will exceed your expectations for comfort and performance.



TECH SPECIFICATIONS

SIZES: 7 / 7.5 / 8 / 8.5 / 9 / 9.5 / 10 / 10.5 / 11 / 11.5 / 12 / 13

FLEX RATING: 5-6	SKILL LEVEL	TERRAIN GUIDE
<p>MOST FLEX MOST SUPPORT</p>	<p>BEGINNER INTERMEDIATE ADVANCED</p>	<p>BACKCOUNTRY ALL-MOUNTAIN PARK / STREET</p>
KEY FEATURES		

ULTRACUSH

Smartwool.

V2 ULTRACUSH WITH SMARTWOOL LINER



V2 POPCUSH FOOTBED



V2 WAFFLE PRO OUTSOLE WITH ALL-TRAC COLD WEATHER RUBBER COMPOUND



BOA FIT SYSTEM FEATURING VANS CUSTOM FOCUS WITH SLIDE GUIDE

OTHER FEATURES



V2 HARNESS



INSTEP FLEX ZONE - BOA SPECIFIC



PLEASURECUFF



HEAT RETENTION 360°



GREEN/GUM
VN0A54G117P



BLACK/PEWTER
VN0A54G1HR0



BLACK/WHITE
VN0A54G1BA2
SIZES: 7-12, 13, 14, 15

AURA™ OG

The Aura OG is a lightweight and responsive boot equipped to excel for all riders in all terrain. The speed and simplicity of its single-dial BOA® Fit System makes precise, on-the-fly adjustability practically effortless, while the V1 Waffle Lug outsole and classic Sidestripe™ add original and unmistakable Vans style.

TECH SPECIFICATIONS

SIZES: 7 / 7.5 / 8 / 8.5 / 9 / 9.5 / 10 / 10.5 / 11 / 11.5 / 12 / 13

FLEX RATING: 4-5		SKILL LEVEL			TERRAIN GUIDE		
<p>MOST FLEX MOST SUPPORT</p>		<p>BEGINNER</p>	<p>INTERMEDIATE</p>	<p>ADVANCED</p>	<p>BACKCOUNTRY</p>	<p>ALL-MOUNTAIN</p>	<p>PARK / STREET</p>
KEY FEATURES							

ULTRACUSH

V1 ULTRACUSH LINER



V1 POPCUSH FOOTBED



V1 WAFFLE LUG OUTSOLE WITH ALL-TRAC COLD WEATHER RUBBER COMPOUND



BOA FIT SYSTEM WITH VANS CUSTOM COILER DIAL

OTHER FEATURES



V1 HARNESS



INSTEP FLEX ZONE - BOA SPECIFIC



PLEASURECUFF



HEAT RETENTION 360°



BLACK/CHECKERBOARD
VN0A54FZ95Y



BLUE/GREY
VN0A54FZY24



BLACK/WHITE
VN0A54FZ0BN

AURA™ LINERLESS

The Aura Linerless redefines simplicity and modern comfort. No other men's snowboard boot offers the combined convenience of a BOA® Fit System and hassle-free entry and exit of a linerless technology package. An updated and improved, lightweight UltraCush™ internal cushioning construction and a V1 POPCUSH™ footbed provide all-day comfort and energy return. From eager beginners to devoted weekend warriors, linerless technology is an entirely different way of approaching your snowboard boots and your riding.



BLACK/GUM
VN000BWGB9M

TECH SPECIFICATIONS

SIZES: 7 / 7.5 / 8 / 8.5 / 9 / 9.5 / 10 / 10.5 / 11 / 11.5 / 12 / 13

FLEX RATING: 3-4	SKILL LEVEL	TERRAIN GUIDE
<p>MOST FLEX MOST SUPPORT</p>	<p>BEGINNER INTERMEDIATE ADVANCED</p>	<p>BACKCOUNTRY ALL-MOUNTAIN PARK / STREET</p>
KEY FEATURES		



LINERLESS TECHNOLOGY



V1 POPCUSH FOOTBED



V1 WAFFLE LUG OUTSOLE WITH ALL-TRAC
COLD WEATHER RUBBER COMPOUND



VANS BOA FIT SYSTEM

OTHER FEATURES



INSTEP FLEX ZONE
- BOA SPECIFIC



PLEASURECUFF



HEAT RETENTION 360°

HI-COUNTRY & HELL-BOUND™

The Hi-Country & Hell-Bound is optimized to take your street or backcountry shred game to the next level. Key performance features, like a V3 POPCUSH™ footbed which offers our highest level of impact cushioning and tuned energy return, the Vans Flex Control System and PowerCuff Strap for custom flex tuning, and a V3 SuperEnduro Waffle outsole, provide the confidence of all-terrain preparedness. A waterproof zipper shroud, D-ring gaiter hooks, one-way breathable valves, and the Vans V3 UltraCush™ TNF FlashDry™ liner promise unmatched moisture management. The Hi-Country will not only take you where you want to go, but it'll give you the tools to show up in style.



TECH SPECIFICATIONS

SIZES: 7 / 7.5 / 8 / 8.5 / 9 / 9.5 / 10 / 10.5 / 11 / 11.5 / 12 / 13

FLEX RATING: 5-8	SKILL LEVEL	TERRAIN GUIDE
<p>MOST FLEX MOST SUPPORT</p>	<p>BEGINNER INTERMEDIATE ADVANCED</p>	<p>BACKCOUNTRY ALL-MOUNTAIN PARK / STREET</p>
KEY FEATURES		

ULTRACUSH
FLASHDRY™

V3 ULTRACUSH WITH
TNF FLASHDRY LINER

POP CUSH

V3 POPCUSH FOOTBED

SNOW WAFFLE
OUTSOLE
ALL-TRAC

V3 WAFFLE SUPERENDURO OUTSOLE WITH
ALL-TRAC COLD WEATHER RUBBER COMPOUND

OTHER FEATURES



WATERPROOF ZIPPER SHROUD
+ D-RING



VANS FLEX CONTROL SYSTEM



WATERPROOF, BREATHABLE VALVES



ASYMMETRICAL FLEX ZONE



POWERCUFF STRAP



V3 HARNESS



INSTEP FLEX ZONE



HEAT RETENTION 360°



KHAKI
VN0A54FLKHK

HI-STANDARD™ PRO

As the Pro-level cousin in the Hi-Standard family, the Hi-Standard Pro has a lot to live up to. The most well-known franchise name in the Vans collection bears the responsibility of delivering on the promises of both performance and style. This latest interpretation of that legacy hits hard on both. Supported by a full suite of V2 components and a look that drips progressive heritage, this is without a doubt the pro-est Hi-Standard ever built.



TECH SPECIFICATIONS

SIZES: 7 / 7.5 / 8 / 8.5 / 9 / 9.5 / 10 / 10.5 / 11 / 11.5 / 12 / 13

FLEX RATING: 5-6	SKILL LEVEL	TERRAIN GUIDE
<p>MOST FLEX MOST SUPPORT</p>	<p>BEGINNER INTERMEDIATE ADVANCED</p>	<p>BACKCOUNTRY ALL-MOUNTAIN PARK / STREET</p>
KEY FEATURES		

ULTRACUSH

Smartwool.

V2 ULTRACUSH WITH SMARTWOOL LINER



V2 POPCUSH FOOTBED



V2 WAFFLE PRO OUTSOLE WITH ALL-TRAC COLD WEATHER RUBBER COMPOUND

OTHER FEATURES



WATERPROOF, BREATHABLE VALVES



POWERCUFF STRAP



ASYMMETRICAL FLEX ZONE



INSTEP FLEX ZONE



V2 HARNESS



PLEASURECUFF



HEAT RETENTION 360°



BENNY URBAN TURTLEDOVE
VN0A3TFKDJR



MTE STANDARD MID CHELSEA WATERPROOF
BENNY URBAN MARSHMALLOW/BLACK
VN000D29KIG
SIZES: 3.5-12, 13



JILL PERKINS BROWN/BLACK
VN0A3TFKY49



BLACK/WHITE
VN0A3TFKBA2

HI-STANDARD™ OG

The Hi-Standard OG is the best-selling Vans boot of all time, and continues to be the standard-bearer for classic style and modern performance. The comfort and familiar feel of traditional lace-up closure gains additional support from key features like our Instep Lace Lockout and Internal Web Harness. With its V1 Waffle Lug outsole and iconic Sidestripe™, this timeless Vans style speaks for itself.



TECH SPECIFICATIONS

SIZES: 7 / 7.5 / 8 / 8.5 / 9 / 9.5 / 10 / 10.5 / 11 / 11.5 / 12 / 13

FLEX RATING: 4-5	SKILL LEVEL	TERRAIN GUIDE
<p>MOST FLEX MOST SUPPORT</p>	<p>BEGINNER INTERMEDIATE ADVANCED</p>	<p>BACKCOUNTRY ALL-MOUNTAIN PARK / STREET</p>
KEY FEATURES		

ULTRACUSH

V1 ULTRACUSH LINER



V1 POPCUSH FOOTBED



V1 WAFFLE LUG OUTSOLE WITH ALL-TRAC COLD WEATHER RUBBER COMPOUND

OTHER FEATURES



INSTEP LACE LOCKOUT



V1 HARNESS



INSTEP FLEX ZONE



PLEASURECUFF



HEAT RETENTION 360°



NAVY/WHITE
VN0A3TFJNAV



BLACK/GREY/GUM
VN0A3TFJFRC



TAN/BLACK
VN0A3TFJY59



BLACK/WHITE
VN0A3TFJT0U

LLT = Long Lead Time - Add additional 30 days when ordering

HI-STANDARD™ LINERLESS DX

The Hi-Standard Linerless DX is an innovative, one-of-a-kind boot like nothing you've worn before. Its slimmed-down, linerless design was developed for street and park riders seeking the freedom of closer contact and better boardfeel. Reduced volume in the upper results in a smaller overall boot, while the V1 Waffle Lug outsole provides a standard footprint for fitting into bindings. The lightweight construction ensures a more connected and skate-like feel, with critical cushioning and support features built directly into the upper.



MIKE RAV



TECH SPECIFICATIONS

SIZES: 7 / 7.5 / 8 / 8.5 / 9 / 9.5 / 10 / 10.5 / 11 / 11.5 / 12 / 13

FLEX RATING: 1-2		SKILL LEVEL			TERRAIN GUIDE		
<p>MOST FLEX MOST SUPPORT</p>		<p>BEGINNER INTERMEDIATE ADVANCED</p>			<p>BACKCOUNTRY ALL-MOUNTAIN PARK / STREET</p>		
KEY FEATURES							



LINERLESS TECHNOLOGY



V1 POPCUSH FOOTBED



V1 WAFFLE LUG OUTSOLE WITH ALL-TRAC
COLD WEATHER RUBBER COMPOUND

OTHER FEATURES			
<p>POWERCUFF STRAP</p>	<p>INSTEP FLEX ZONE</p>	<p>PLEASURECUFF</p>	<p>HEAT RETENTION 360°</p>



MIKE RAV DARK PURPLE
VN0A3TFIDRV

NAVY/BLACK
VN0A3TFINGV

LLT = Long Lead Time - Add additional 30 days when ordering

HI-STANDARD™ LINERLESS

Simply stated, the Hi-Standard Linerless goes, and goes quickly. Its lightweight construction is soft yet supportive, flexible yet responsive, and offers next-level on-and-off simplicity. An updated and improved UltraCush™ internal cushioning package and V1 POPCUSH™ footbed provide all-day comfort and energy return so you can focus on snowboarding and having fun.



TECH SPECIFICATIONS

SIZES: 7 / 7.5 / 8 / 8.5 / 9 / 9.5 / 10 / 10.5 / 11 / 11.5 / 12 / 13

FLEX RATING: 3-4	SKILL LEVEL	TERRAIN GUIDE
<p>MOST FLEX MOST SUPPORT</p>	<p>BEGINNER INTERMEDIATE ADVANCED</p>	<p>BACKCOUNTRY ALL-MOUNTAIN PARK / STREET</p>
KEY FEATURES		



OTHER FEATURES		
<p>INSTEP FLEX ZONE</p>	<p>PLEASURECUFF</p>	<p>HEAT RETENTION 360°</p>



BLACK/GUM
VN000CBEB9M

LLT = Long Lead Time - Add additional 30 days when ordering

WOMEN'S SNOWBOARD BOOTS



LUNA VENTANA™ PRO

There's no looking past the Luna Ventana's sharp design. This boot walks the line between utilitarian fashion and Vans' heritage aesthetic. A full complement of Pro Spec features and Vans' Hybrid BOA® Fit System positions it among a limited and elite offering in a growing women's market. We are purveyors of imagination, and the Luna Ventana Pro represents Vans' best work in design for women's snowboarding.



TECH SPECIFICATIONS

SIZES: 5 / 5.5 / 6 / 6.5 / 7 / 7.5 / 8 / 8.5 / 9 / 9.5 / 10 / 11

FLEX RATING: 5-7	SKILL LEVEL	TERRAIN GUIDE
<p>MOST FLEX MOST SUPPORT</p>	<p>BEGINNER INTERMEDIATE ADVANCED</p>	<p>BACKCOUNTRY ALL-MOUNTAIN PARK / STREET</p>
KEY FEATURES		

ULTRACUSH

Smartwool.

V2 ULTRACUSH WITH SMARTWOOL LINER



V2 POPCUSH FOOTBED



V2 WAFFLE PRO OUTSOLE WITH ALL-TRAC COLD WEATHER RUBBER COMPOUND



BOA FIT SYSTEM WITH VANS HYBRID CUSTOM SLIDE GUIDE

OTHER FEATURES



WATERPROOF, BREATHABLE VALVES



POWERCUFF STRAP



V2 HARNESS



INSTEP FLEX ZONE



PLEASURECUFF



HEAT RETENTION 360°



BLACK/RED
VN0A5KS2458



TAN/BLACK
VN0A5KS2Y59

LLT = Long Lead Time - Add additional 30 days when ordering

VIAJE™ RANGE EDITION

The Viaje Range Edition is the absolute outer rim and frontline of progressive snowboard boots for women, and this upgraded version of the Viaje is intended to be a functional and reliable addition to any backcountry toolkit. Designed to support overland adventures and uphill travel, the Range Edition's Adaptive Range Mode features a Range Limiter and Rear Drop Cuff which can be unlocked to widen the top opening of the boot for a significantly expanded range of motion. Skinning a switchback, punching up for quick pow scores, ripping the snowmobile deep into the hills, or just going for a good old-fashioned hike, the Range Edition package gets you there with less effort and more versatility than ever before.



VANS®

**HANA
BERMAN**

TECH SPECIFICATIONS

SIZES: 5 / 5.5 / 6 / 6.5 / 7 / 7.5 / 8 / 8.5 / 9 / 9.5 / 10 / 11

FLEX RATING: 6-9	SKILL LEVEL	TERRAIN GUIDE
<p>MOST FLEX MOST SUPPORT</p>	<p>BEGINNER INTERMEDIATE ADVANCED</p>	<p>BACKCOUNTRY ALL-MOUNTAIN PARK / STREET</p>
KEY FEATURES		

ULTRACUSH

FLASHDRY™

V3 RANGE EDITION ULTRACUSH WITH TNF FLASHDRY LINER



V3 POPCUSH FOOTBED



V3 WAFFLE SUPERENDURO OUTSOLE WITH ALL-TRAC COLD WEATHER RUBBER COMPOUND



BOA FIT SYSTEM FEATURING VANS CUSTOM FOCUS PLUS WITH SLIDE GUIDE

OTHER FEATURES



ADAPTIVE RANGE MODE



WATERPROOF ZIPPER SHROUD + D-RING



EXOCAP MOLDED TOE PROTECTION



VANS FLEX CONTROL SYSTEM



WATERPROOF, BREATHABLE VALVES



ASYMMETRICAL FLEX ZONE



INSTEP FLEX ZONE - BOA SPECIFIC



POWERCUFF STRAP



VANS®
**HANA
BERMAN**

HANA BEAMAN GRAPE LEAF/BROWN
VN00BCJ0CL



VANS®
**HANA
BERMAN**

MTE STANDARD MID CHELSEA WATERPROOF
HANA BEAMAN BROWN/GREEN
VN000D29BGS
SIZES: 3.5-10

ENCORE™ PRO

With timeless style, comfort, and dependable control in equal measure, the Encore Pro is an advanced and versatile women's-specific boot built to perform in all environments. It features our dual-zone BOA® Fit System featuring Vans Custom Focus for unlimited, on-the-fly micro-adjustability, backed by the customizable comfort and heel hold of the Custom Slide Guide. Add in the V2 UltraCush™ Smartwool® liner and V2 POPCUSH™ footbed, and the Encore Pro just might be your new favorite part about snowboarding.



TECH SPECIFICATIONS

SIZES: 5 / 5.5 / 6 / 6.5 / 7 / 7.5 / 8 / 8.5 / 9 / 9.5 / 10 / 11

FLEX RATING: 5-6	SKILL LEVEL	TERRAIN GUIDE
<p>MOST FLEX MOST SUPPORT</p>	<p>BEGINNER INTERMEDIATE ADVANCED</p>	<p>BACKCOUNTRY ALL-MOUNTAIN PARK / STREET</p>
KEY FEATURES		

ULTRACUSH

Smartwool.

V2 ULTRACUSH WITH SMARTWOOL LINER



V2 POPCUSH FOOTBED



V2 WAFFLE PRO OUTSOLE WITH ALL-TRAC COLD WEATHER RUBBER COMPOUND



BOA FIT SYSTEM FEATURING VANS CUSTOM FOCUS WITH SLIDE GUIDE

OTHER FEATURES



V2 HARNESS



INSTEP FLEX ZONE - BOA SPECIFIC



PLEASURECUFF



HEAT RETENTION 360°



KHAKI/WHITE
VN0A3TFQKHW



OLIVE/GUM
VN0A3TFQ00R



BLACK/MARSHMALLOW
VN0A3TFQ1KP

ENCORE™ OG

The Encore OG is designed for women who want a lightweight and comfortable boot that excels for all riders in all terrain types. The speed and simplicity of its single-dial BOA® Fit System make precise, on-the-fly adjustability practically effortless, while the V1 Waffle Lug outsole and classic Sidestripe™ add original and unmistakable Vans style.



TECH SPECIFICATIONS

SIZES: 5 / 5.5 / 6 / 6.5 / 7 / 7.5 / 8 / 8.5 / 9 / 9.5 / 10 / 11

FLEX RATING: 4-5	SKILL LEVEL	TERRAIN GUIDE
<p>MOST FLEX MOST SUPPORT</p>	<p>BEGINNER INTERMEDIATE ADVANCED</p>	<p>BACKCOUNTRY ALL-MOUNTAIN PARK / STREET</p>
KEY FEATURES		

ULTRACUSH

V1 ULTRACUSH LINER



V1 POPCUSH FOOTBED



V1 WAFFLE LUG OUTSOLE WITH ALL-TRAC COLD WEATHER RUBBER COMPOUND



BOA FIT SYSTEM WITH VANS CUSTOM COILER DIAL

OTHER FEATURES



V1 HARNESS



INSTEP FLEX ZONE - BOA SPECIFIC



PLEASURECUFF



HEAT RETENTION 360°



WHITE/WHITE
VN0A3TFPWVW



PURPLE/WHITE
VN0A3TFPZ1N



BLACK/WHITE
VN0A3TFP0BN

ENCORE™ LINERLESS

The Encore Linerless redefines simplicity and modern comfort. No other women's snowboard boot offers the combined convenience of a BOA® Fit System and the hassle-free entry and exit of a linerless technology package. An updated and improved lightweight UltraCush™ internal cushioning construction and V1 POPCUSH™ footbed provide all-day comfort and energy return. From eager beginners to devoted weekend warriors, linerless technology is an entirely different way of approaching your snowboard boots and your riding.



TECH SPECIFICATIONS

SIZES: 5 / 5.5 / 6 / 6.5 / 7 / 7.5 / 8 / 8.5 / 9 / 9.5 / 10 / 11

FLEX RATING: 3-4		SKILL LEVEL			TERRAIN GUIDE		
<p>MOST FLEX MOST SUPPORT</p>		<p>BEGINNER</p>	<p>INTERMEDIATE</p>	<p>ADVANCED</p>	<p>BACKCOUNTRY</p>	<p>ALL-MOUNTAIN</p>	<p>PARK / STREET</p>
KEY FEATURES							



LINERLESS TECHNOLOGY



V1 POPCUSH FOOTBED



V1 WAFFLE LUG OUTSOLE WITH ALL-TRAC COLD WEATHER RUBBER COMPOUND



VANS BOA FIT SYSTEM

OTHER FEATURES



INSTEP FLEX ZONE - BOA SPECIFIC



PLEASURECUFF



HEAT RETENTION 360°



BLACK/MARSHMALLOW
VN0A4BJ21KP

HI-STANDARD™ PRO

As the Pro-level cousin in the Hi-Standard family, the Hi-Standard Pro has a lot to live up to. The most well-known franchise name in the Vans collection bears the responsibility of delivering on the promises of both performance and style. This latest interpretation of that legacy hits hard on both. Supported by a full suite of V2 components and a look that drips progressive heritage, this is without a doubt the pro-est Hi-Standard ever built.



VANS®
Jill
PERKINS

TECH SPECIFICATIONS

SIZES: 5 / 5.5 / 6 / 6.5 / 7 / 7.5 / 8 / 8.5 / 9 / 9.5 / 10 / 11

FLEX RATING: 5-6	SKILL LEVEL	TERRAIN GUIDE
<p>MOST FLEX MOST SUPPORT</p>	<p>BEGINNER INTERMEDIATE ADVANCED</p>	<p>BACKCOUNTRY ALL-MOUNTAIN PARK / STREET</p>
KEY FEATURES		

ULTRACUSH

Smartwool.

V2 ULTRACUSH WITH SMARTWOOL LINER

POP CUSH

V2 POPCUSH FOOTBED

SNOW WAFFLE
OUTSOLE
ALL-TRAC

V2 WAFFLE PRO OUTSOLE WITH ALL-TRAC COLD WEATHER RUBBER COMPOUND

OTHER FEATURES



WATERPROOF, BREATHABLE VALVES



POWERCUFF STRAP



ASYMMETRICAL FLEX ZONE



INSTEP FLEX ZONE



V2 HARNESS



PLEASURECUFF



HEAT RETENTION 360°



VANS®
Jill
PERKINS

JILL PERKINS MARSHMALLOW/DEMITASSE
VN000CBBKHG

HI-STANDARD™ OG

The Hi-Standard OG is the best-selling Vans boot of all time, and continues to be the standard-bearer for classic style and modern performance. The comfort and familiar feel of traditional lace-up closure gains additional support from key features like our Instep Lace Lockout and Internal Web Harness. With its V1 Waffle Lug outsole and iconic Sidestripe™, this timeless Vans style speaks for itself.



TECH SPECIFICATIONS

SIZES: 5 / 5.5 / 6 / 6.5 / 7 / 7.5 / 8 / 8.5 / 9 / 9.5 / 10 / 11

FLEX RATING: 4-5	SKILL LEVEL	TERRAIN GUIDE
<p>MOST FLEX MOST SUPPORT</p>	<p>BEGINNER INTERMEDIATE ADVANCED</p>	<p>BACKCOUNTRY ALL-MOUNTAIN PARK / STREET</p>
KEY FEATURES		

ULTRACUSH

V1 ULTRACUSH LINER



V1 POPCUSH FOOTBED



V1 WAFFLE LUG OUTSOLE WITH ALL-TRAC COLD WEATHER RUBBER COMPOUND

OTHER FEATURES



INSTEP LACE LOCKOUT



V1 HARNESS



INSTEP FLEX ZONE



PLEASURECUFF



HEAT RETENTION 360°



MULTI COLOR BLOCK
VN0A3TFSD1Q



BLACK/WHITE
VN0A3FFST0U

YOUTH SNOWBOARD BOOTS



JUVIE™ OG

The Juvie OG is built to support groms who rip. Complete with a V1 UltraCush™ liner, V1 POPCUSH™ footbed, and V1 Waffle Lug outsole, this boot matches features with all of Vans' adult-level OG products. When combined with the BOA® Fit System, the Juvie OG is the youth culture's clear choice for progression and undeniable style.



TECH SPECIFICATIONS

SIZES: 4 / 5 / 6

FLEX RATING: 3-4	SKILL LEVEL	TERRAIN GUIDE
<p>MOST FLEX MOST SUPPORT</p>	<p>BEGINNER INTERMEDIATE ADVANCED</p>	<p>BACKCOUNTRY ALL-MOUNTAIN PARK / STREET</p>
KEY FEATURES		

ULTRACUSH

V1 ULTRACUSH LINER



V1 POPCUSH FOOTBED



V1 WAFFLE LUG OUTSOLE WITH ALL-TRAC COLD WEATHER RUBBER COMPOUND



VANS BOA FIT SYSTEM

OTHER FEATURES



V1 HARNESS



INSTEP FLEX ZONE - BOA SPECIFIC



PLEASURECUFF



HEAT RETENTION 360°



BLACK/WHITE
VN0A4UVUBA2

**JUVIE™
LINERLESS**

The Juvie Linerless is designed for young riders seeking lightweight construction and redefined simplicity. The BOA® Fit System provides speed and convenience, while Vans' linerless technology offers a softer, more forgiving flex for the next generation of rippers.



TECH SPECIFICATIONS

SIZES: 1 / 2 / 3 / 4 / 5 / 6

FLEX RATING: 2-3	SKILL LEVEL	TERRAIN GUIDE
<p>MOST FLEX MOST SUPPORT</p>	<p>BEGINNER INTERMEDIATE ADVANCED</p>	<p>BACKCOUNTRY ALL-MOUNTAIN PARK / STREET</p>
KEY FEATURES		



LINERLESS TECHNOLOGY

ULTRACUSH

V1 ULTRACUSH FOOTBED



V1 WAFFLE LUG OUTSOLE WITH ALL-TRAC COLD WEATHER RUBBER COMPOUND



VANS BOA FIT SYSTEM

OTHER FEATURES



INSTEP FLEX ZONE - BOA SPECIFIC



PLEASURECUFF



HEAT RETENTION 360°



BLACK/WHITE
VN0A4UV0BA2

JUVIE™ MINI

Start 'em young and start 'em in style. The Juvie Mini starts from way down in size to welcome the youngest riders to the Vans Snow family. Linerless technology and hook-and-loop closure allow for easy on-and-off, while an UltraCush™ Grow-With-You footbed provides all-day comfort and multiple seasons of use.



BLACK/WHITE
VN0A4UVNBA2

TECH SPECIFICATIONS

SIZES: 7 / 8 / 9 / 10 / 11 / 12 / 13

FLEX RATING: 1-2		SKILL LEVEL			TERRAIN GUIDE		
<p>MOST FLEX MOST SUPPORT</p>		<p>BEGINNER</p>	<p>INTERMEDIATE</p>	<p>ADVANCED</p>	<p>BACKCOUNTRY</p>	<p>ALL-MOUNTAIN</p>	<p>PARK / STREET</p>
KEY FEATURES							



LINERLESS TECHNOLOGY

ULTRACUSH

V1 ULTRACUSH FOOTBED



V1 WAFFLE LUG OUTSOLE WITH ALL-TRAC COLD WEATHER RUBBER COMPOUND

OTHER FEATURES



HOOK-AND-LOOP CLOSURE



INSTEP FLEX ZONE



PLEASURECUFF



HEAT RETENTION 360°

WINTER MTE™ TECHNOLOGY





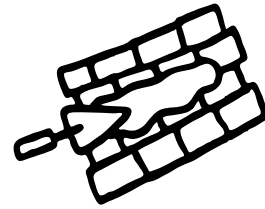
MOISTURE MANAGEMENT

Keeping snow and wet out is the fundamental objective of winter boots, followed closely by cool winter style, of course. Vans provides both, supported by industry-leading tech partners and waterproof, seam-sealed construction.

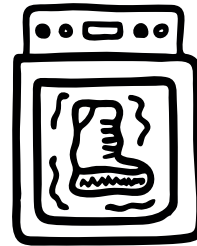


GORE-TEX® BREATHABLE WATERPROOF PACKAGE

NEW GORE-TEX PRODUCTS WITH EPE MEMBRANE TECHNOLOGY. BRAND NEW MATERIAL IS NON-PFC LAMINATE THROUGHOUT. ENABLES A REDUCED CARBON FOOTPRINT AS MEASURED BY HIGG MSI THROUGH THE USE OF A NEW LOWER-MASS MEMBRANE AND SELECTED TEXTILES IN THE LAMINATE. USES RECYCLED MATERIALS IN THE LAMINATE'S TEXTILE COMPONENT, WHICH HELPS TO REDUCE THE AMOUNT OF PLASTIC WASTE AND CAN SAVE ENERGY INSTEAD OF CREATING NEW MATERIALS. FOR MORE INFORMATION PLEASE VISIT WWW.GORE-TEX.COM.



WATERPROOF, SEAM-SEALED CONSTRUCTION



WATERPROOF, VULCANIZED RUBBER LOWER

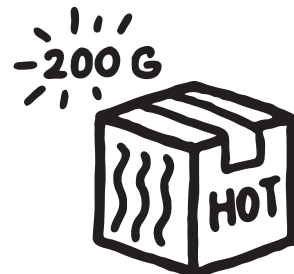


THERMOREGULATION

Shoveling the driveway, running to the market, or walking the dog—we all want warm feet on a cold day, and Vans delivers. Including the all-new and innovative Duratherm insulation package from trusted partner GORE-TEX® and other varying gram-weight insulation packages. With removable insulated liners, warm boots are just a thing we do now.

GORE-TEX
DURATHERM

GORE-TEX DURATHERM INSULATION PACKAGE



100-200 GRAM INSULATION PACKAGES



INSULATED REMOVABLE LINER



TRACTION

Specially designed for cruising around in cold weather conditions, Snow MTE™ outsoles offer next-level grip and traction. Aggressive reverse waffle lug patterns provide variable terrain and street grip, while siped tire-like designs increase overall traction. Add in the multi-level, dynamic surfacing Vans proprietary cold weather rubber compound, All-Trac, and you've got Vans-approved winter foot control.

ALL-TRAC

COLD WEATHER-SPECIFIC ALL-TERRAIN RUBBER COMPOUND



MTE-APPROVED OUTSOLE TREAD PATTERNS

OTHER KEY FEATURES

THE BOA® FIT SYSTEM



The BOA® Fit System delivers a dialed-in, micro-adjustable, precision fit ... engineered and built to perform on the mountain's toughest terrain.

STRETCH GORE



A lightweight and resilient stretch material that allows ease of movement.

POWERCUFF STRAP



Power is the operative word with the PowerCuff Strap. It provides extra support at the top of the boot for increased stability and response. Its configuration gives the Standard™ XF a customizable level of engagement.

BREATHABLE VALVES



These waterproof valves allow one-way moisture management by transporting moisture away from your foot, ensuring breathability and thermal regulation for dry, comfortable feet.

WATERPROOF ZIP CLOSURE



Lace style with simple on-and-off functionality, waterproof zippers will save you time and energy during the winter months.

HOOK-AND-LOOP CLOSURE



A classic alternative closure option, hook-and-loop passes are clean and easy, and offer a different kind of lifestyle option.

EXOCAP



The TPU-molded ExoCap is designed to be abrasion-resistant and disperse unwanted compression, while safeguarding the toes.

MEN'S WINTER MTE™



MTE™ STANDARD ZIP WATERPROOF

LEATHER AND RUBBER UPPER | WATERPROOF, VULCANIZED, AND SEAM-SEALED CONSTRUCTION | WATERPROOF MEDIAL ZIP CLOSURE
 SNOW MTE FELT LINER THERMAL PACKAGE | STANDARD SNOW MTE OUTSOLE WITH ALL-TRAC COLD WEATHER RUBBER COMPOUND
 AVAILABLE IN SIZES: 3.5-12, 13



MTE STANDARD ZIP WATERPROOF
 Brown/Black
 Available September 1, 2024
 U VN000D2EY49 LLT

MTE™ STANDARD WATERPROOF

LEATHER AND RUBBER UPPER | WATERPROOF, VULCANIZED, AND SEAM-SEALED CONSTRUCTION | SNOW MTE FELT LINER
 THERMAL PACKAGE | STANDARD SNOW MTE OUTSOLE WITH ALL-TRAC COLD WEATHER RUBBER COMPOUND
 AVAILABLE IN SIZES: 3.5-12, 13



MTE STANDARD WATERPROOF
 Black/Navy
 Available September 1, 2024
 U VN000D2DYA6 LLT



MTE STANDARD WATERPROOF
 Black/White
 Available September 1, 2024
 U VN000D2DBA2 LLT



MTE STANDARD WATERPROOF
 Green/Gum
 Available September 1, 2024
 U VN000D2D17P LLT

MTE™ STANDARD MID BOA® WATERPROOF

LEATHER AND RUBBER UPPER | WATERPROOF, VULCANIZED, AND SEAM-SEALED CONSTRUCTION | SNOW MTE 100-GRAM INSULATION PACKAGE
 BOA FIT SYSTEM | STANDARD SNOW MTE OUTSOLE WITH ALL-TRAC COLD WEATHER RUBBER COMPOUND
 AVAILABLE IN SIZES: 3.5-12, 13



MTE STANDARD MID BOA WATERPROOF
 Black/Black/White
 Available September 1, 2024
 U VN000D2BB8C LLT

MTE™ STANDARD MID CHELSEA WATERPROOF

LEATHER GORE, AND RUBBER UPPER | WATERPROOF, VULCANIZED, AND SEAM-SEALED CONSTRUCTION | SNOW MTE 100-GRAM INSULATION PACKAGE | STANDARD SNOW MTE OUTSOLE WITH ALL-TRAC COLD WEATHER RUBBER COMPOUND
 AVAILABLE IN SIZES: 3.5-12, 13



MTE STANDARD MID CHELSEA WATERPROOF
 Benny Urban Marshmallow/Black
 Available September 1, 2024
 U VN000D29KIG LLT



MTE STANDARD MID CHELSEA WATERPROOF
 Brown/Gum
 Available September 1, 2024
 U VN000D29B7G LLT

MTE™ STANDARD MID WATERPROOF

LEATHER AND RUBBER UPPER | WATERPROOF, VULCANIZED, AND SEAM-SEALED CONSTRUCTION | SNOW MTE 100-GRAM INSULATION PACKAGE | STANDARD SNOW MTE OUTSOLE WITH ALL-TRAC COLD WEATHER RUBBER COMPOUND
 AVAILABLE IN SIZES: 3.5-12, 13



MTE™ SNOW-KICKER GORE-TEX®

LEATHER AND TEXTILE UPPERS | NON-PFC GORE-TEX WATERPROOF PACKAGE | 200-GRAM NON-PFC GORE-TEX DURATHERM INSULATION PACKAGE | TRIPLE-DENSITY ULTRACUSH™ DROP-IN FOOTBED | LUGGED OUTSOLE WITH ALL-TRAC COLD WEATHER RUBBER COMPOUND
 AVAILABLE IN SIZES: 3.5-12, 13



MTE STANDARD MID WATERPROOF
 Blake Paul Black/Forest
 Available September 1, 2024
 U VN000D2C2MC LLT



MTE STANDARD MID WATERPROOF
 Black/White
 Available September 1, 2024
 U VN000D2CBA2 LLT



MTE STANDARD MID WATERPROOF
 Tan/Black
 Available September 1, 2024
 U VN000D2CY59 LLT



MTE SNOW-KICKER GORE-TEX
 Black/Multi
 Available September 1, 2024
 U VN000D28BML LLT



MTE SNOW-KICKER GORE-TEX
 Brown/Gum
 Available September 1, 2024
 U VN000D28B7G LLT

MTE™ SNOW LODGE SLIPPER MID

TEXTILE UPPERS | 100-GRAM INSULATION PACKAGE | STANDARD SNOW BOOT FULL RUBBER LUGGED OUTSOLE
AVAILABLE IN SIZES: 4-13 (WHOLE SIZES ONLY)



MTE™ MOUNTAIN MULE

PREMIUM FULL GRAIN AND TEXTILE UPPERS | 100-GRAM INSULATION PACKAGE | STANDARD SNOW BOOT FULL RUBBER LUGGED OUTSOLE
AVAILABLE IN SIZES: 4-13 (WHOLE SIZES ONLY)



MTE SNOW LODGE SLIPPER MID
Blake Paul Forest/Black
Available September 1, 2024
U VN000D2AACW LLT



MTE SNOW LODGE SLIPPER MID
Quilted Black
Available September 1, 2024
U VN000D2ABLA LLT



MTE MOUNTAIN MULE
Brown/Brown
Available September 1, 2024
U VN000D27BW2 LLT



MTE MOUNTAIN MULE
Quilted Black
Available September 1, 2024
U VN000D27BLK LLT

WOMEN'S WINTER MTE™



MTE™ STANDARD ZIP WATERPROOF

LEATHER AND RUBBER UPPER | WATERPROOF VULCANIZED AND SEAM-SEALED CONSTRUCTION | WATERPROOF MEDIAL ZIP CLOSURE
 SNOW MTE FELT LINER THERMAL PACKAGE | STANDARD SNOW MTE OUTSOLE WITH ALL-TRAC COLD WEATHER RUBBER COMPOUND
 AVAILABLE IN SIZES: 3.5-10



MTE STANDARD ZIP WATERPROOF
 Olive/Gum
 Available September 1, 2024
 F-Unisex VN000D2E0QR LLT

MTE™ STANDARD WATERPROOF

LEATHER AND RUBBER UPPER | WATERPROOF VULCANIZED AND SEAM-SEALED CONSTRUCTION | WATERPROOF MEDIAL ZIP CLOSURE
 SNOW MTE FELT LINER THERMAL PACKAGE | STANDARD SNOW MTE OUTSOLE WITH ALL-TRAC COLD WEATHER RUBBER COMPOUND
 AVAILABLE IN SIZES: 3.5-10



MTE STANDARD WATERPROOF
 Black/Red
 Available September 1, 2024
 F-Unisex VN000D2D458 LLT



MTE STANDARD WATERPROOF
 Khaki/Marshmallow
 Available September 1, 2024
 F-Unisex VN000D2D0VI LLT

MTE™ STANDARD MID WATERPROOF

LEATHER AND RUBBER UPPER | WATERPROOF VULCANIZED AND SEAM-SEALED CONSTRUCTION | SNOW MTE 100-GRAM INSULATION PACKAGE | STANDARD SNOW MTE OUTSOLE WITH ALL-TRAC COLD WEATHER RUBBER COMPOUND
 AVAILABLE IN SIZES: 3.5-10



MTE STANDARD MID WATERPROOF
 White/White
 Available September 1, 2024
 F-Unisex VN000D2CWWW LLT

MTE™ STANDARD MID CHELSEA WATERPROOF

LEATHER GORE AND RUBBER UPPER | WATERPROOF VULCANIZED AND SEAM-SEALED CONSTRUCTION | SNOW MTE 100-GRAM INSULATION PACKAGE | STANDARD SNOW MTE OUTSOLE WITH ALL-TRAC COLD WEATHER RUBBER COMPOUND
 AVAILABLE IN SIZES: 3.5-10



MTE STANDARD MID CHELSEA WATERPROOF
 Hana Beaman Brown/Green
 Available September 1, 2024
 F-Unisex VN000D29BGS LLT



MTE STANDARD MID CHELSEA WATERPROOF
 Beige/Khaki
 Available September 1, 2024
 F-Unisex VN000D29Y2B LLT

APPAREL & ACCESSORIES



MTE™ HIGH-COUNTRY 3L JACKET

- 100% Polyester woven solid 3L snow jacket
- Fully seam-sealed and waterproof zippers
- Adjustable cuffs, hem, hood, and powder skirt
- Meshlined zippered vents
- Chest pockets with dual zippers
- Peripheral hood adjustment
- Hidden toggle cinch hood
- Media cord access
- Embroidered Vans branding at the back

XS-XXL
Available September 1, 2024



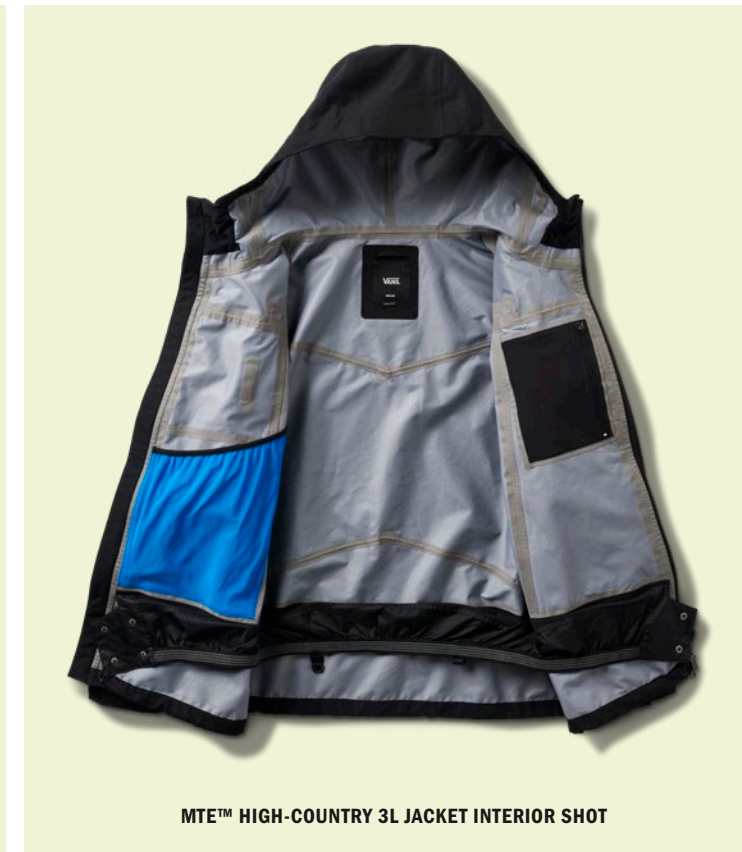
BLACK
VN0009UGBLK



WARM OLIVE
VN0009UGCIC



MTE™ HIGH-COUNTRY 3L JACKET



MTE™ HIGH-COUNTRY 3L JACKET INTERIOR SHOT

MTE™ HIGH-COUNTRY 3L PANT

- 100% Polyester
- 3L unlined snow pant
- Fully seam-sealed and covered zippers
- Adjustable hem cinch and waistband
- Stretch gaiters with boot clip
- Mesh-lined zipper vents
- Reinforced knee panels
- Powder skirt attachments
- Cargo and back pockets

XS-XXL
Available September 1, 2024



BLACK
VN0009UEBLK



GOTHIC OLIVE
VN0009UECUQ



MTE™ HIGH-COUNTRY 3L PANT



MTE™ HIGH-COUNTRY 3L PANT GAITER SHOT



MTE™ HELLBOUND JACKET

- Shell: Recycled 100% Polyamide;
- Lining: 100% Recycled Polyester 210T
- 2L snow jacket with 2 oz. polyester fill insulation
- Fully seam-sealed and water-repellent zippers
- Adjustable cuffs, hem, hood, and powder skirt
- Mesh-lined zippered vents
- Chest pockets with dual zippers
- Peripheral hood adjustment
- Hidden toggle cinch hood
- Media cord access
- Printed Vans branding at the back

XS-XXL
Available September 1, 2024



BLACK/ASPHALT
VN0009UFKOU



FIESTA/GREEN GABLES
VN0009UFDRP



BLACK
VN0A3I4NBLK



DRESS BLUES
VN0A3I4NLKZ

VANS SNOW SOCK

- 65% Acrylic 16% Nylon 16% Polyester
- 2% Elastodiene 1% Elastane
- Snow sock with ankle and arch support
- Jacquard art

S-XL
Available September 1, 2024



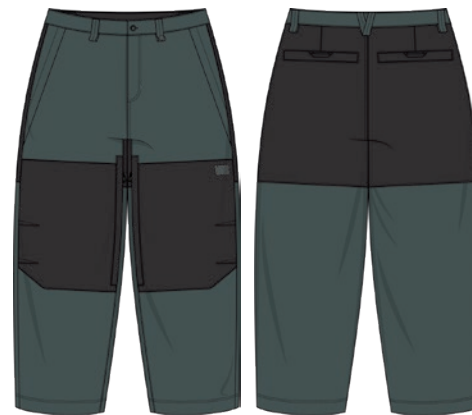
MTE™ HELLBOUND JACKET

- Recycled 100% Polyamide
- 2L mesh-lined shell snow pant
- Fully seam-sealed and covered zippers
- Adjustable hem cinch and waistband
- Stretch gaiters with boot clip
- Mesh-lined zipper vents
- Reinforced knee panels
- Powder skirt attachments

XXS-XXL
Available September 1, 2024



BLACK/ASPHALT
VN0009UDKOU



BLACK/GREEN GABLES
VN0009UDDRJ

MEN'S SNOWBOARD BOOTS

HYBRID

INFUSE™ SNOWSURF



BROWN/BLACK
VN000CZ8Y49

INFUSE™



BLACK/PEWTER
VN0A3DILHR0

BLACK/WHITE
VN0A3DILBA2

INVADO™ PRO



BLACK/OLIVE
VN0A54FNBK0

BLACK/GUM
VN0A54FNB9M

INVADO™ OG



WHITE/GREY
VN0A54FM92A

BLACK/WHITE
VN0A54FMY28

BOA®

VERSE™ RANGE EDITION



BLAKE PAUL FOREST/BLACK
VN0A4UVDACW



GREEN/GUM
VN0A54G117P

AURA™ PRO



BLACK/PEWTER
VN0A54G1HR0



BLUE/GREY
VN0A54FZY24

AURA™ LINERLESS



BLACK/GUM
VN000BWGB9M

VERSE™



PARKER SZUMOWSKI BLACK/BUNGEE CORD
VN0A3DIQ4Y4



BLACK/WHITE
VN0A54G1BA2
SIZES: 7-12, 13, 14, 15

AURA™ OG



BLACK/WHITE
VN0A54FZ0BN

LACE

HI-COUNTRY & HELL-BOUND™



KHAKI
VN0A54FLKHK

HI-STANDARD™ PRO



BENNY URBAN TURTLEDOVE
VN0A3TFKDJR



JILL PERKINS BROWN/BLACK
VN0A3TFKY49



BLACK/WHITE
VN0A3TFKBA2

HI-STANDARD™ OG



NAVY/WHITE
VN0A3TFJNAV



BLACK/GREY/GUM
VN0A3TFJFRC



TAN/BLACK
VN0A3TFJY59



BLACK/WHITE
VN0A3TFJT0U

HI-STANDARD™ LINERLESS DX



MIKE RAV DARK PURPLE
VN0A3TFIDRV



NAVY/BLACK
VN0A3TFINGV

HI-STANDARD™ LINERLESS



BLACK/GUM
VN000CBEB9M

WOMEN'S SNOWBOARD BOOTS

YOUTH SNOWBOARD BOOTS

HYBRID

LUNA VENTANA™ PRO



BLACK/RED
VN0A5KS2458

TAN/BLACK
VN0A5KS2Y59

BOA®

VIAJE™ RANGE EDITION



HANA BEAMAN GRAPE LEAF/BROWN
VN000BCJ0CL

ENCORE™ PRO



KHAKI/WHITE
VN0A3TFQKHV



OLIVE/GUM
VN0A3TFQ0QR



BLACK/MARSHMALLOW
VN0A3TFQ1KP

ENCORE™ OG



WHITE/WHITE
VN0A3TFPWWV



PURPLE/WHITE
VN0A3TFPZ1N



BLACK/WHITE
VN0A3TFP0BN

ENCORE™ LINERLESS



BLACK/MARSHMALLOW
VN0A4BJ21KP

LACE

HI-STANDARD™ PRO



JILL PERKINS MARSHMALLOW/DEMITASSE
VN000CBBKHG

HI-STANDARD™ OG



MULTI COLOR BLOCK
VN0A3TFSD1Q



BLACK/WHITE
VN0A3TFST0U

BOA®

JUVIE™ OG



BLACK/WHITE
VN0A4UVUBA2
SIZES: 4 - 6

JUVIE™ LINERLESS



BLACK/WHITE
VN0A4UV0BA2
SIZES: 1 - 6

JUVIE™ MINI



BLACK/WHITE
VN0A4UVNBA2
SIZES: 7 - 13

MEN'S WINTER MTE™

MTE™ STANDARD ZIP WATERPROOF



BROWN/BLACK
VN000D2EY49 LLT

MTE™ STANDARD WATERPROOF



BLACK/NAVY
VN000D2DYA6 LLT



BLACK/WHITE
VN000D2DBA2 LLT



GREEN/GUM
VN000D2D17P LLT

MTE™ STANDARD MID BOA® WATERPROOF



BLACK/BLACK/WHITE
VN000D2BB8C LLT



BENNY URBAN
MARSHMALLOW/BLACK
VN000D29KIG LLT



BROWN/GUM
VN000D29B7G LLT

MTE™ STANDARD MID WATERPROOF



BLAKE PAUL BLACK/FOREST
VN000D2C2MC LLT



BLACK/WHITE
VN000D2CBA2 LLT



TAN/BLACK
VN000D2CY59 LLT



BLACK/MULTI
VN000D28BML LLT



BROWN/GUM
VN000D28B7G LLT

MTE™ SNOW-KICKER GORE-TEX®

MTE™ SNOW LODGE SLIPPER MID



BLAKE PAUL FOREST/BLACK
VN000D2AACW LLT



QUILTED BLACK
VN000D2ABLA LLT



BROWN/BROWN
VN000D27BW2 LLT



QUILTED BLACK
VN000D27BLK LLT

MTE™ MOUNTAIN MULE

WOMEN'S WINTER MTE™

MTE™ STANDARD ZIP WATERPROOF



OLIVE/GUM
VN000D2E0QR LLT

MTE™ STANDARD WATERPROOF



BLACK/RED
VN000D2D458 LLT



KHAKI/MARSHMALLOW
VN000D2D0VI LLT

MTE™ STANDARD MID WATERPROOF



WHITE/WHITE
VN000D2CWWW LLT



HANA BEAMAN BROWN/GREEN
VN000D29BGS LLT



BEIGE/KHAKI
VN000D29Y2B LLT

MTE™ STANDARD MID CHELSEA WATERPROOF

MTE™ MOUNTAIN MULE



KHAKI/GUM
VN000D275SM LLT

SIZE CONVERSION CHART

MEN	3.5	4	4.5	5	5.5	6	6.5	7	7.5	8	8.5	9	9.5	10	10.5	11	11.5	12	13	14	15	16	
WOMEN	5	5.5	6	6.5	7	7.5	8	8.5	9	9.5	10	10.5	11	11.5	12								
UK	2.5	3	3.5	4	4.5	5	5.5	6	6.5	7	7.5	8	8.5	9	9.5	10	10.5	11	12	13	14	15	
EUR	34.5	35	36	36.5	37	38	38.5	39	40	40.5	41	42	42.5	43	44	44.5	45	46	47	48	49	50	
CM	21.5	22	22.5	23	23.5	24	24.5	25	25.5	26	26.5	27	27.5	28	28.5	29	29.5	30	31	32	33	34	

UNISEX SIZING

3.5–12, 13

FEMALE UNISEX SIZING

3.5–12, 13

SIZES AVAILABLE

U = Unisex

F-Unisex = Female Unisex

LONG LEAD TIME

LLT = Add additional 30 days when ordering

MEN'S TOPS SIZE GUIDE

ALPHA SIZE	XS	S	M	L	XL	XXL
CHEST	29"-32"	33"-36"	37"-40"	41"-44"	45"-48"	49"-52"

MEN'S BOTTOMS SIZE GUIDE

WAIST SIZE	25	26	27	28	29	30	31	32	33	34	36	38	40
ALPHA SIZE	XS	XS	S	S	S	M	M	M	L	L	L	XL	XL
WAIST	24½"-25"	25½"-26"	26½"-27"	27½"-28"	28½"-29"	29½"-30"	30½"-31"	31½"-32"	32½"-33"	33½"-34"	35½"-36"	37½"-38"	39½"-40"
HIP	31½"-32"	32½"-33"	33½"-34"	34½"-35"	35½"-36"	36½"-37"	37½"-38"	38½"-39"	39½"-40"	40½"-41"	42½"-43"	44½"-45"	46½"-47"

WOMEN'S TOPS SIZE GUIDE

ALPHA SIZE	XXS	XS	S	M	L	XL	XXL
BUST	30"	31"-32"	33"-34"	35"-36"	37½"-39"	40½"-42"	44"-46"

WOMEN'S BOTTOMS SIZE GUIDE

WAIST SIZE	22	23	24	25	26	27	28	29	30	32	34	36	38
ALPHA SIZE	XXS	XS	XS	S	S	M	M	L	L	XL	XL	XXL	XXL
WAIST	22"	23"	24"	25"	26"	27"	28"	29½"	31"	32½"	34"	36½"	39"
HIP	33"	34"	35"	36"	37"	38"	39"	40½"	42"	43½"	45"	47"	49"

APPAREL UNISEX SIZE CONVERSION GUIDE

MENS	XS	S	M	L	XL	XXL
WOMENS	S	M	L	XL	XXL	—

HOW TO MEASURE:

The ideal fit means better-looking clothes with more comfort.

MEASURING TIPS

- Measure over undergarments, not over clothes or shoes.
- Use a fiberglass tape measure.
- Always keep the tape measure parallel to the floor, and don't let it twist.

CHEST/BUST

With arms relaxed at the side of the body, measure under the arms around the fullest part of the bust.

WAIST

With heels slightly apart, measure around the narrowest part of the waist.

HIPS

With heels slightly apart, measure around the fullest part of the hips.

COVER IMAGE: JILL PERKINS
PHOTOGRAPHY BY OLI GAGNON, BEN RAYNER

© 2023 VANS, INC. ALL RIGHTS RESERVED. VANS, THE VANS LOGOS, DESIGNS AND MODEL NAMES ARE TRADEMARKS OF VANS, INC.

BOA® IS A REGISTERED TRADEMARK OF BOA TECHNOLOGY INC.
THE FLASHDRY™ TRADEMARK IS OWNED BY THE NORTH FACE APPAREL CORP
GORE-TEX® © COPYRIGHT 2024 W.L. GORE & ASSOCIATES GMBH.
© 2024 ORTHOLITE, INC. IS A REGISTERED TRADEMARK OF O2 PARTNERS, LLC.
HYTREL™ IS A REGISTERED TRADEMARK OF E.I. DU PONT NEMOURS & COMPANY

